



---

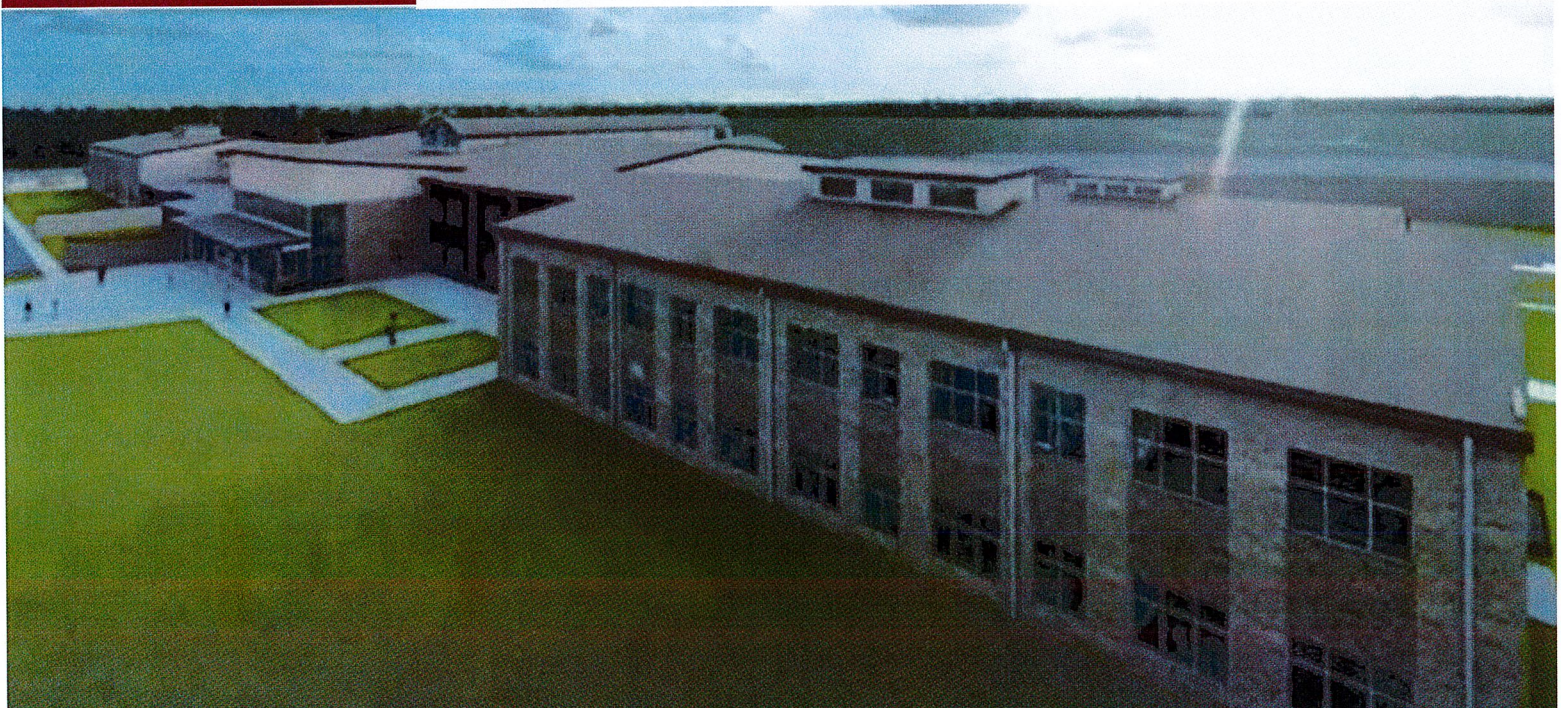
## New Construction

PROGRESS UPDATE

October 2023

---

# Southeast Pre K-12 School





## PROJECT SUMMARY

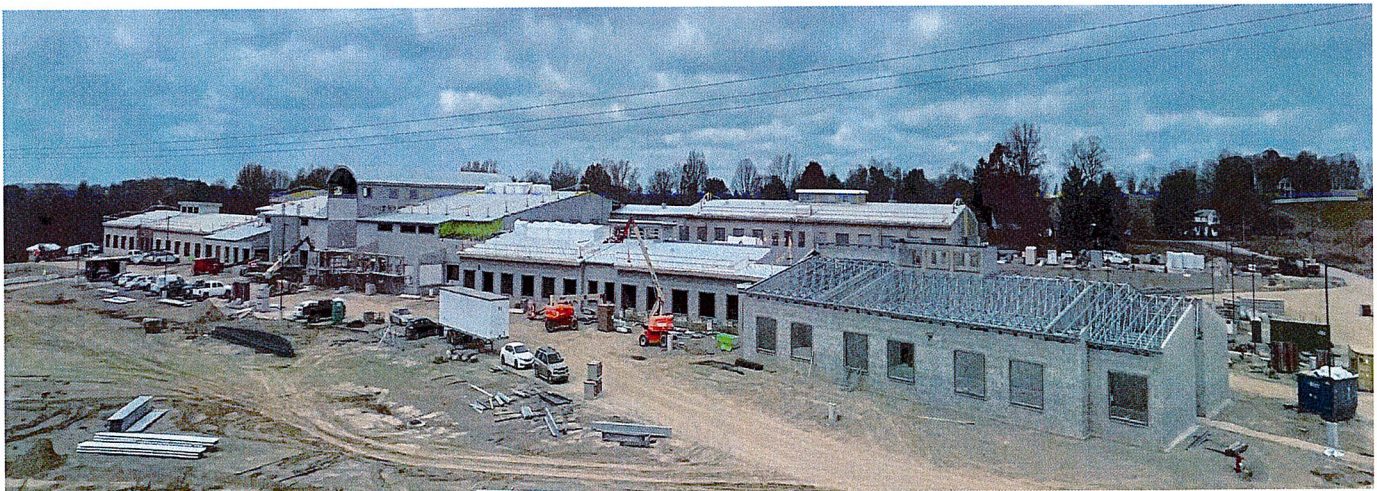
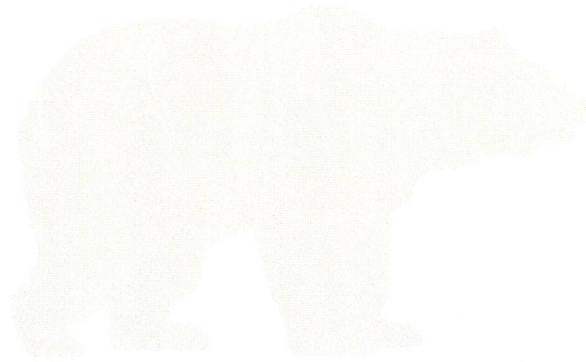
### Site Development & Landscaping

#### October 2023 Progress

- Site
- Utilities
  - Pumphouse Roof Dry-in– 100%

#### Upcoming Progress

- Downspout Storm Piping





## PROJECT SUMMARY

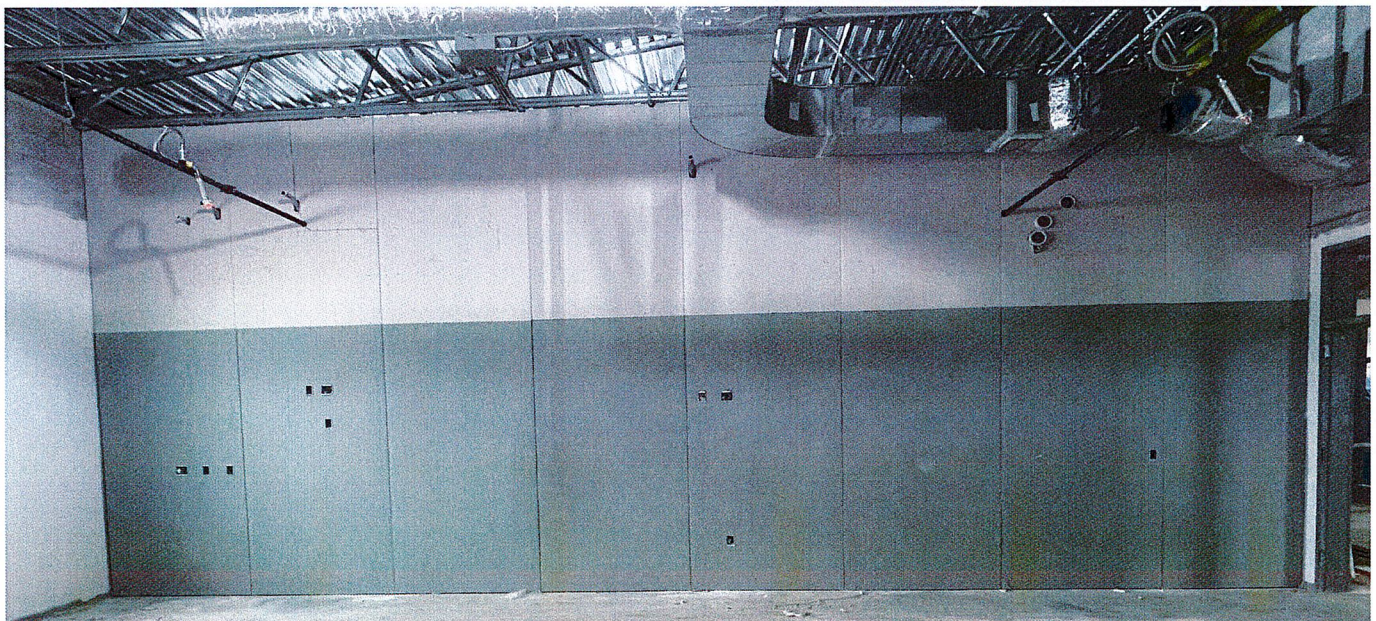
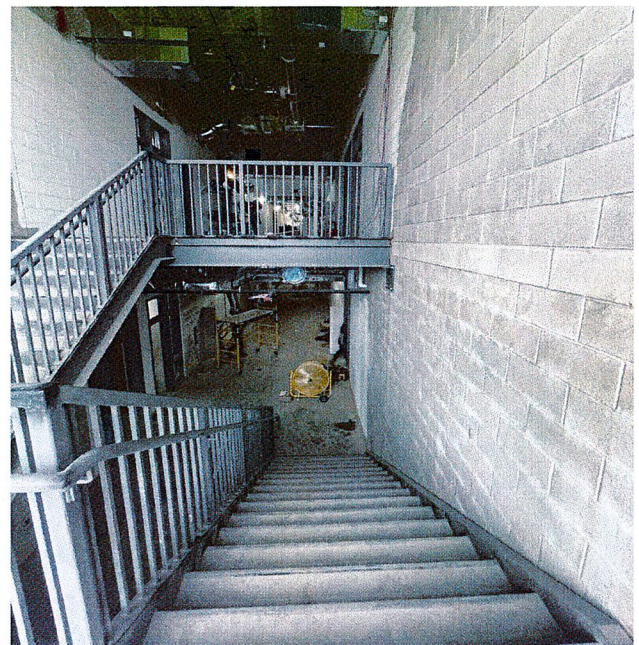
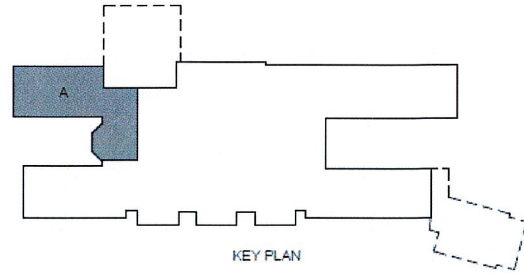
### Area A

#### October 2023 Progress

- Set Hollow Metal Frames– 100%
- Temp Heat– 100%
- Set Windows– 100%
- Fire Protection Rough-in– 90%
- Hang Cable Trays– 100%
- Hang Wall Board– 30%
- Roof Finishes– 85%
- Prime Paint– 85%
- Pour Stair– 100%

#### Upcoming Progress

- Hang Wall Board
- Paint CMU Walls
- Roof Finishes





## PROJECT SUMMARY

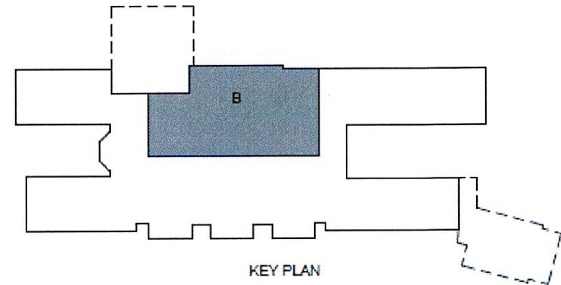
### Area B

#### October 2023 Progress

- Temp Roof Dry-in– 50%
- Structural Steel – 100%
- Second Floor MEP Overhead Ongoing– 70%
- Cavity Insulation and Brick Veneer– 85%
- Chilled Water Piping– 100%
- Non-bearing CMU Walls– 100%
- Set Metal Deck– 100%

#### Upcoming Progress

- Prep CMU Walls for Paint
- Form and Pour Stair Seating
- Continue Temp Roof Dry-in
- Second Floor MEP Overhead Rough-in



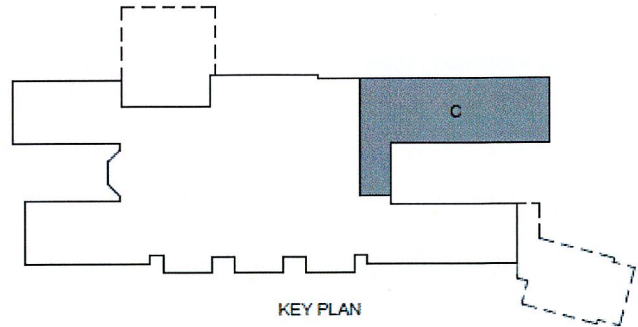


## PROJECT SUMMARY

### Area C

#### October 2023 Progress

- Second Floor Interior Metal Framing– 95%
- MEP Piping– 70%
- Spray Foam Monitor– 100%
- Cavity Insulation and Brick Veneer– 100%
- Stairwell Ongoing– 30%
- Set Windows– 50%
- Set Metal Deck– 100%
- Prep CMU Walls for Paint– 85%



#### Upcoming Progress

- Continue MEP Piping
- Set Windows
- Pour Stair





## PROJECT SUMMARY

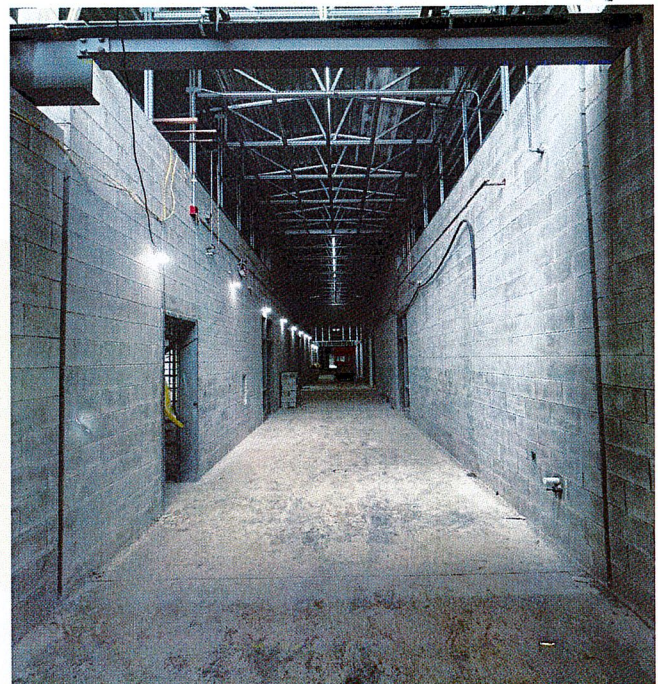
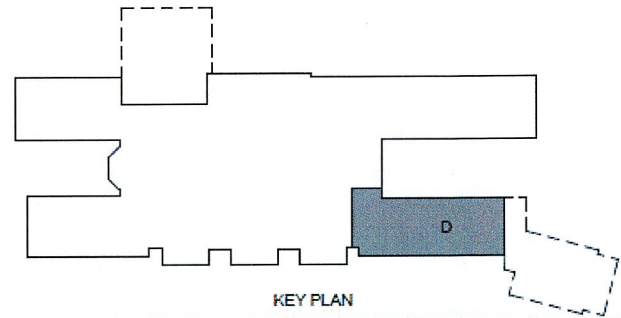
### Area D

#### October 2023 Progress

- MEP Rough – In– 30%
- MEP Piping– 30%
- Temp Roof Dry-in– 100%
- Set Metal Deck– 90%
- Interior Metal Framing– 85%

#### Upcoming Progress

- MEP Rough – In
- MEP Piping
- Interior Metal Framing



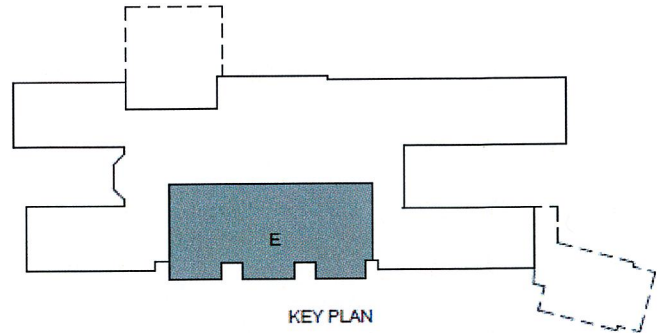


## PROJECT SUMMARY

### Area E

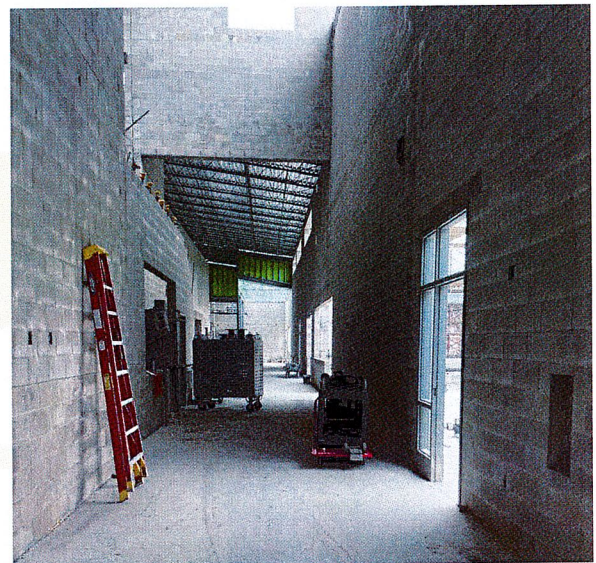
#### October 2023 Progress

- Bowstring Insulation– 100%
- Set Trusses– 80%
- Pour Admins Slab on Grade– 100%
- Set Lower Bowstring– 100%
- Temp Roof Dry-in– 90%
- Prep CMU Walls for Paint– 20%
- Second Floor MEP Overhead Rough-in–65%



#### Upcoming Progress

- Continue MEP Overhead Rough-in
- Set Trusses
- Continue Temp Roof Dry-in
- Cavity Insulation and Brick Veneer



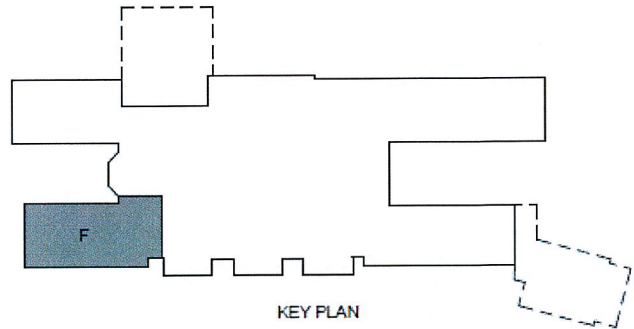


## PROJECT SUMMARY

### Area F

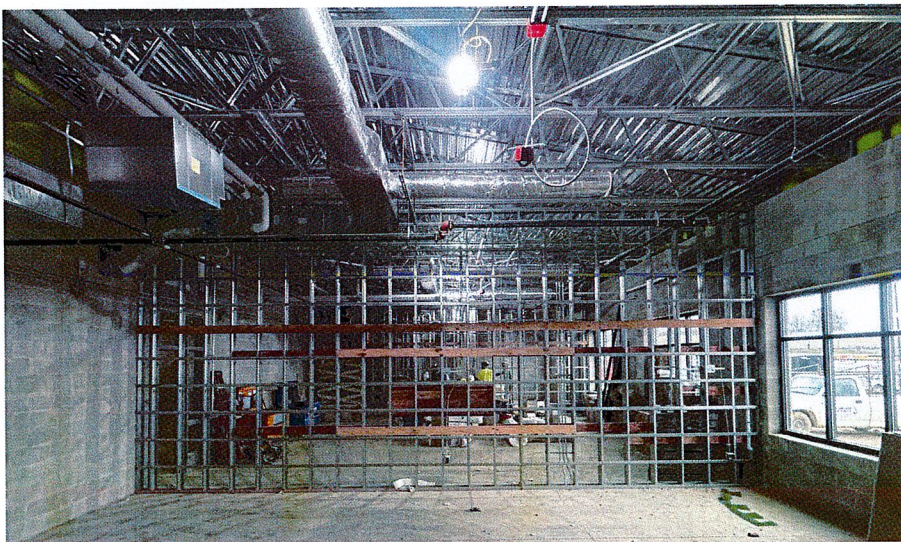
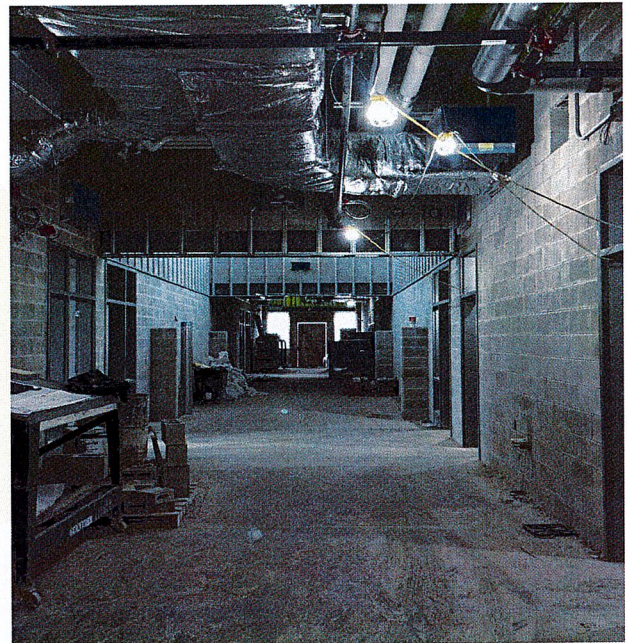
#### October 2023 Progress

- Set Windows– 100%
- Temp Heat– 100%
- Prime Paint– 15%
- Hang Wall Board– 10%



#### Upcoming Progress

- Roof Finishes
- Paint CMU Walls



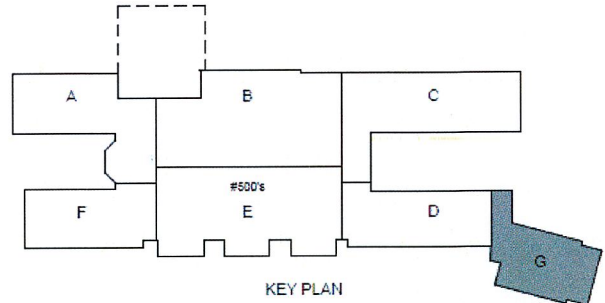


## PROJECT SUMMARY

### Area G

#### October 2023 Progress

- MEP Rough-In- 30%
- MEP Piping- 30%



#### Upcoming Progress

- Set Metal Deck
- MEP Piping
- MEP Rough-In

